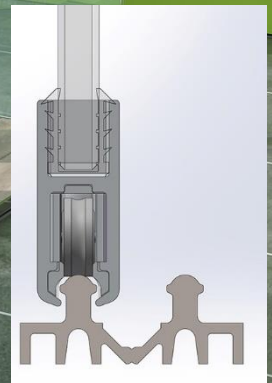


Security track 603 63N + sliding track + roller + gasket seal



Lock : pin + latch
603 50Y

- Track : 603 63N
- Slide : 603 69U
- Roller : 603-43R
- Gasket seal :
603 57Q

Tel : +(33) (0)1.60.03.62.00

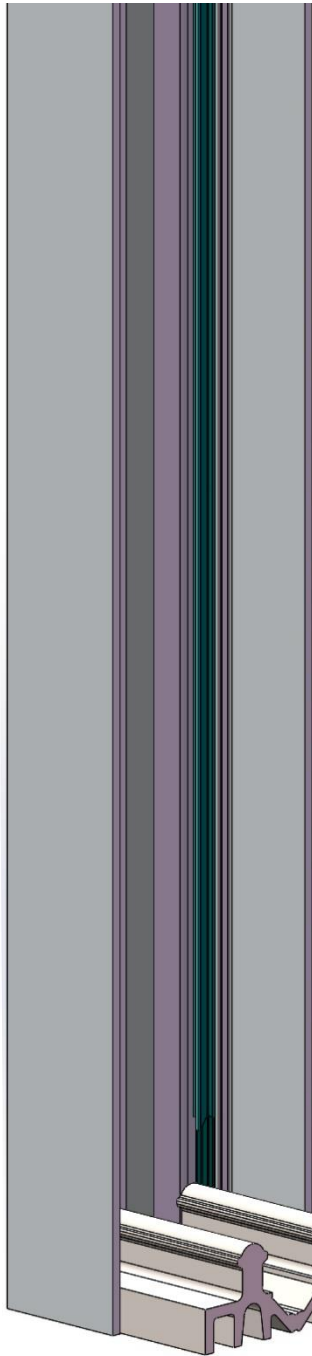
SECURITRACK

ONLINE CONFIGURATOR

https://www.adler-sa.fr/projets/vitrine/vitrine_1.asp

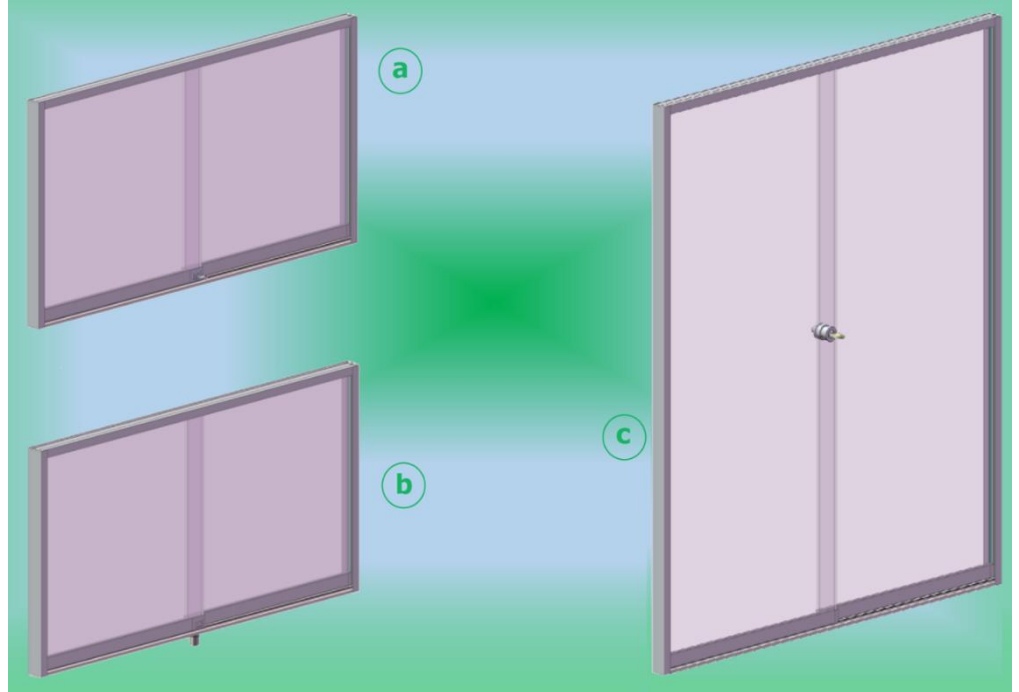
Façade partition systems

The 3 models below illustrate a part of the possible variants of SECURITRACK sliding door installation. All using vertical tracks to : 1) to hide the defects of squareness of furniture 2) to secure the closure of the window against the hooking and bending of the doors 3) to protect the window of dust with eyelashes PVC joints.



Classical assembly of Securitrack flushed lock in the shoe section.

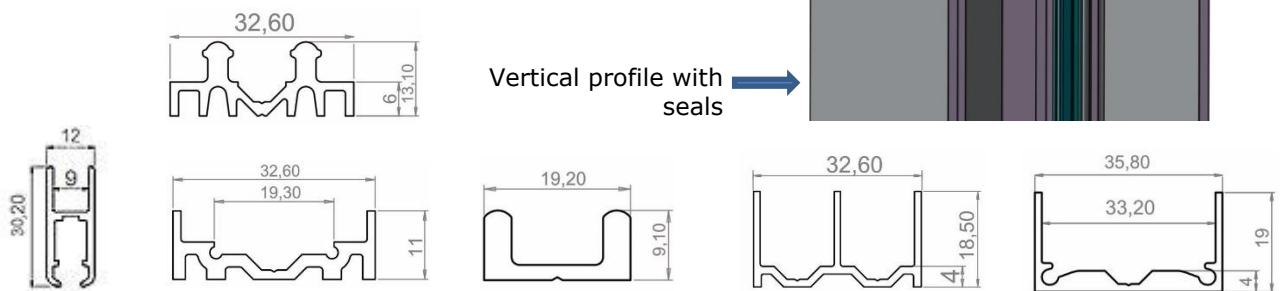
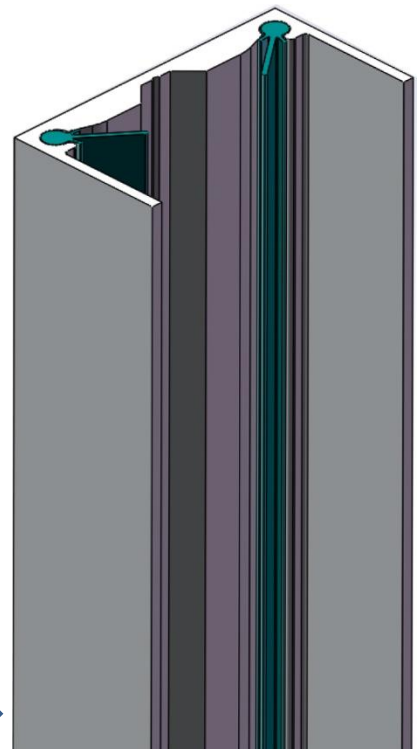
Main entrance secured by breast high lock.



A cable free system with electromagnetic lock

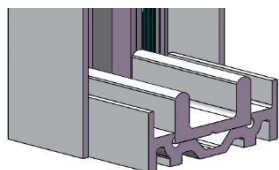
Securitrack implements several fast Adler® mechanical and electromagnetic locking solutions always miniaturized, even invisible and very secure.

Vertical profil showing adjustment with lower track



Choosing the right track

*A perfect finish
on the sides*



*The side slide allows a
total framing of the
showase without an
additional cut.*

If §2 = electromagnetic
lock
If vertical profiles
If showcases to be
followed

Easy care



*The lower «U» track :
for glass food showcase*

N/A
N/A
N/A

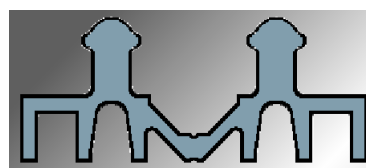
To be RAL painted



*The «U»profile embeded in
its «U» track support :
To be lacquered with the
furniture*

N/A
POSSIBLE
N/A

Securised



*The 'clover' section :
for securised shop
showcases.*

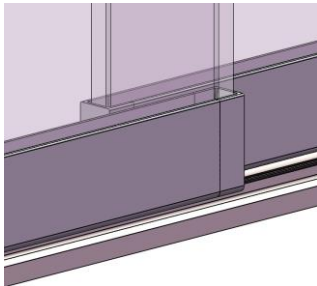
POSSIBLE
POSSIBLE
POSSIBLE

Profils		Lenght	Natural anodized	Sale unit	BSS	PSS	GSS
Upper profile		4m20	60366R	PCE	60377C	*60524W	60510X
			60367S	Pack of 12			
Sliding profile	60369U		PCE	60378D	*60525P	60513A	
	60370V		Pack of 12				
Security track	60363N		PCE	60379F	*60526Q	60512Z	
	60364P		Pack of 16				
Lower « U » track	60380G		PCE			60514B	
	60381H		Pack of 16				
Support for « U » track	60383K		PCE				
	60384L		Pack of 16		2m95	2m90	2m90
Guiding profile PVC		2 m	60396Y	PCE	For shoe section mounted on 'U' track 60380G		
Side vertical profile		4m20	60372X	PCE	60386N	*60527R	60511Y
			60373Y	Pack of 16		2m90	
Seal for side vertical profile		au mètre PVC	60312H	Profile silicone used for sealing window and soft closing door stop.			
Gasket seal		1m50	60467A	For simple construction with of 6 mm glass			
		au mètre	60470D				
		2m50	60457Q				

* on request 2m90

Choosing the right lock (end section)

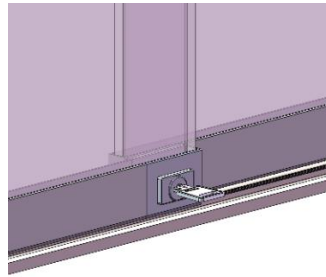
No lock



Simple end-shoe sections :

To center the glass panel with a smooth and silent guiding.

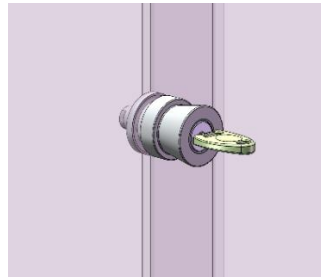
Integrated lock



Mechanical locking :

Discrete flushed flat façade.
Wafer lock

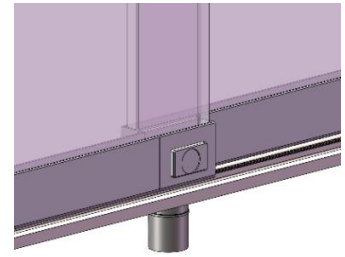
Centre lock



Accessible lock :

Anti-intrusion : glasses can't be pulled apart.
Wafer lock

electromagnetic lock




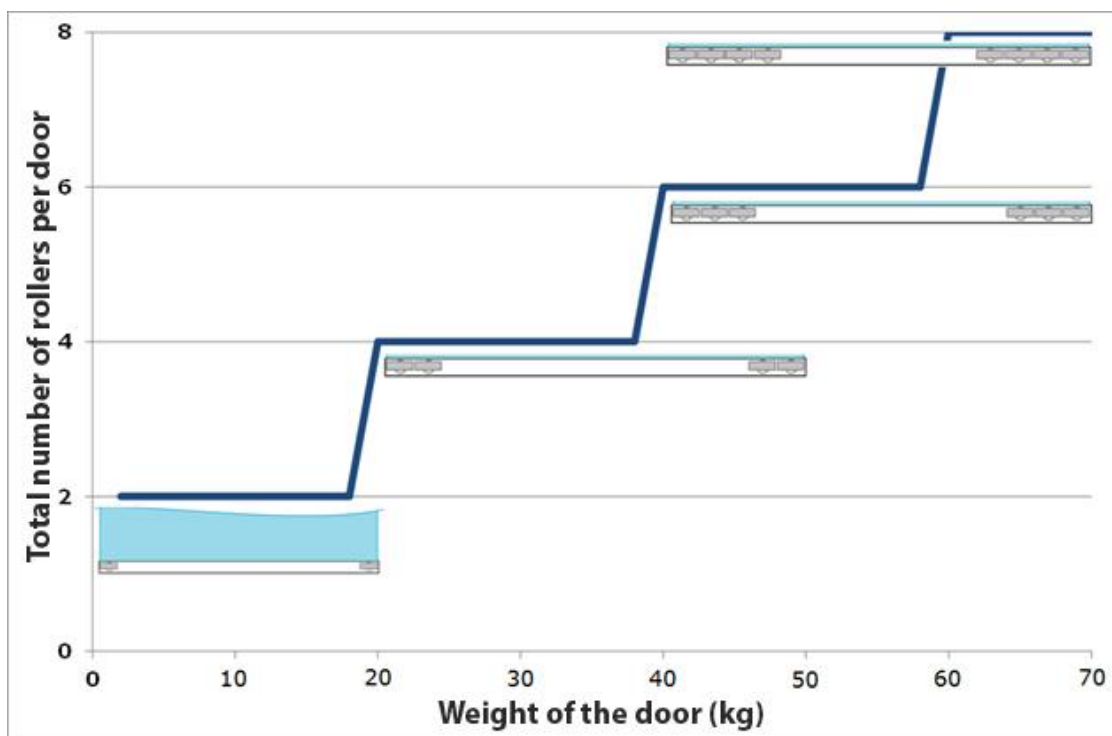
Invisible electromagnetic locking system :



For a better detection of :
- unlocked doors
- burglary attempt
- record of the events

Selection of accessories for each case

Accessories		Matt chromed	Natural anodized		BSS	PSS	GSS	S.U.
Set of end-parts			60349X		60348W	60340N	60347V	x 4
Silent guiding. Avoid glass from sliding in the profile. Built in plastic stopper								
Kit end-parts locker			60354C	same key	60357G	60391T	60356F	x 1
			60350Y	different key	60353B	60390S	60352A	x 1
Key N°1			60398A	Key n°2 and 3 on request				x 1
All the benefits of simple tips 60340N - 60347V - 60349X - 60348W with a miniaturized lock patented by Adler for an aesthetic and ergonomic façade --> no protrusion								
Safety lock 90°		Drilling Ø 26 - 28	60344S	same key	60345T		60346U	x 1
			60375A	different key	60376B			x 1
Key n°11			63861Q	Key n°12 to 15 on request				x 1
Electromagnetic lock			64274P + 60358H		60361L	60359J	60360K	x 1
Ratchet lock				same key	60083J	60081G		x 1
Vibration Damper			60485V		For glass thickness 6-8-44.2			x 1
A unique model of anti-rattle clip on 6,8,44.2 glass. Guidance in the upper profile being dissociated from the tightening of the clamp remains perfect whatever fluctuations of glass thickness.								

Accessories		Natural anodized		S.U.
Nylon roller		60343R	A unique roller for a smooth movement. High load capacity. No track profile wear.	x 1
<i>For maximum stability, the rollers must be distributed to each of the 2 ends of the profile (no roller in the middle)</i>				



Track stop		B	60326X			<i>To be used with a 'clover' section</i>	x 1
Track stop with latch		BG	60387P				x 1

Roller track systems with 3 or more sliding doors

Assemblage 1







Assemblage 2





Example



Accessories : ordinary solutions

Accessories		Natural anodized	Comments	Nickel	PSS	GSS	S.U.
Simple end-part		60464X					x 1
Reversible mechanical lock			same key		60487X 60482S	60483T	x 1
		60481R	different key				x 1
Simple lock			different key		63761G	63760F	x 1
serrure à crémaillère			même combinaison	60083J	60081G		x 1

Accessories			Comments	Chrome	Silver	Gold	S.U
Self-adhesive « finger pull » handle		rectangular		69925G	69928K	69929L	x 10
		round			69918Y	69919Z	x 10

Kit Securitrack 3 finishes



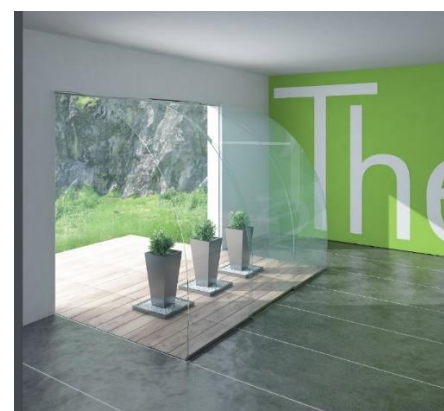
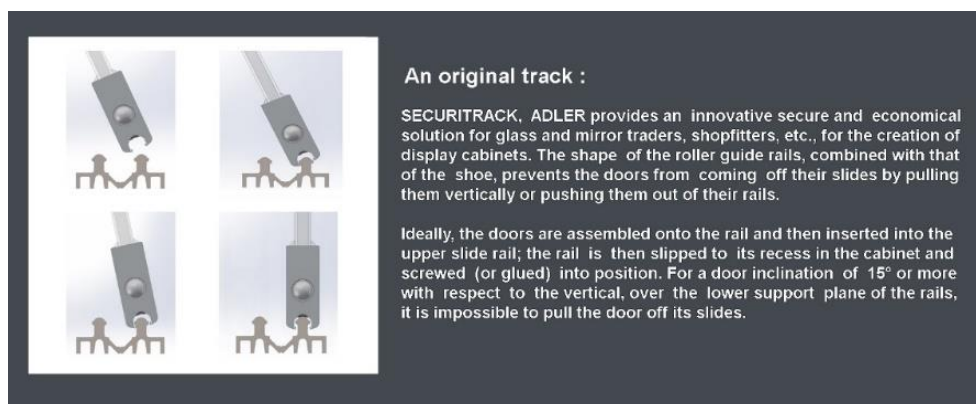
Designation	Natural anodized	BSS	GSS
1m45	607 00A	607 03D	607 02C
1m38	607 07J	607 06H	607 05G

Another assembly : double rail and shoe profile



Lock button with retractable penne at the opening. It offers protection against manipulations: spacing, pullout, rotation.

Tightening aluminium on glass referring to patent Adler®.



Use the configurator to obtain a quotation and technical data:

https://www.adler-sa.fr/projets/vitrine/vitrine_1.asp

- Sliding doors
- customer area
- password